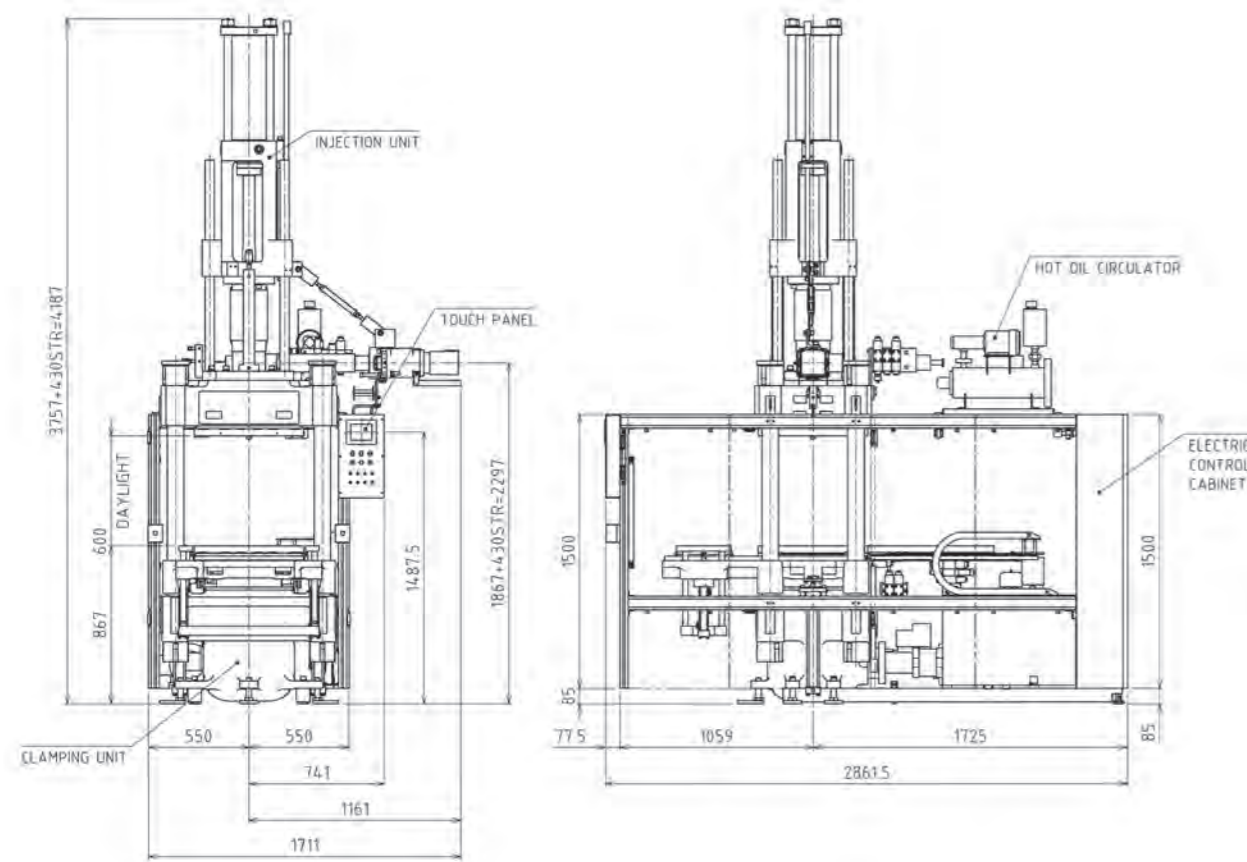


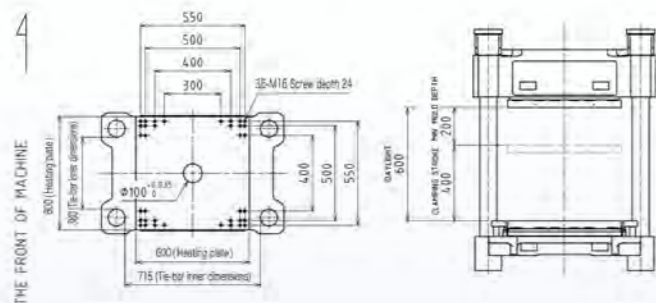
VI-200P(XJ) General assembly drawing



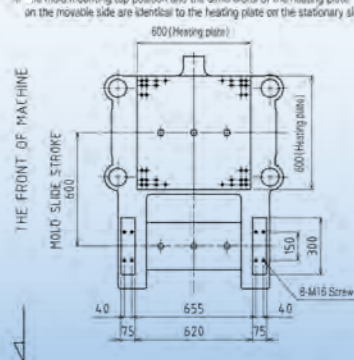
Specification item	Model	VI-200P(XJ)
Clamping mechanism: Vertical 4-supports direct pressure type with side high speed cylinder		
Clamping force (ram diameter: 355 mm, hydraulic pressure: 20 MPa)	kN	1960
Mold opening force	kN	59
Daylight	mm	600
Stroke	mm	400
Minimum mold thickness	mm	200
Size of mold heating plate (W x D)	mm	600x600
Mold clamping speed, 3 speeds (maximum)	mm/sec	200
Mold opening speed, 3 speeds (maximum)	mm/sec	150
Mold slide stroke	mm	600
Inside ejector projection	mm	100
Out side ejector stroke	mm	200
Ejector force	kN	40

Mold attachment drawing

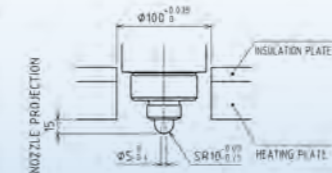
[Stationary platen]



[Movable platen]



[Nozzle section]



[Ejector section]



Specification item	Model	40/70SPR2
Injection mechanism: Screw preplasticating type		
Injection volume	cm <sup>3</sup>	1500
Injection pressure (hydraulic pressure: 20 MPa)	MPa	188
Screw diameter	mm	40
Plunger diameter	mm	70
Plunger stroke	mm	390
Screw rotation (when operating under no load)	rpm	0 ~ 80
Injection rate	cm <sup>3</sup> /sec	139
Plasticizing capacity (at 80 rpm)*	kg/hr	38
Nozzle dimension	mm	SR10xφ5
Nozzle touch method: Vertical moving type using hydraulic cylinder		
Nozzle touch force	kN	28
Nozzle touch stroke	mm	430
Size of material supply inlet (curved shape at both ends)	mm	63x12

\* Plasticizing capacity varies according to rubber material type and molding conditions.

Utility specifications		
Electric power source	3-phase 200V AC, 50/60Hz	kW 37.4
Pump motor (controller output)		kW 15.0
Operation power source		kW 1.0
Mold heater (mold/heating plate heater replacement type)	Stationary side	kW 9.0
	Movable side	kW 9.0
Hot oil circulator for injection (MN-20)		kW 3.4
Operation oil, ISO VG32 to 46 or equivalent (standard oil quantity)	Oil level indicator (maximum indication)	145L
	Tank capacity	170L
Machine weight	ton	5



株式会社 松田製作所

本社・工場 〒346-0035 埼玉県久喜市清久町1-1  
TEL.0480(22)2111(代) FAX.0480(22)2110  
東京支店 〒100-0006 東京都千代田区有楽町2-10-1  
東京交通会館11階1103号  
TEL.03(6284)2234 FAX.03(6284)2235  
大阪支所 〒564-0063 大阪府吹田市江坂町2-2-16  
TEL.06(6155)5444 FAX.06(6155)5445  
名古屋支店 〒485-0045 愛知県小牧市川西1-2-2  
TEL.0568(72)5931 FAX.0568(73)1862

タイ Matsuda Manufacturing (Thailand) Co.,Ltd. 111 Building A, 2Fl., Unit A202, Praditmanutham Road, Ladprao, Ladprao, Bangkok 10230, Thailand  
Tel: +66- (0)2-117-1185  
Fax: +66- (0)2-117-1184

中国 馬持大貿易(上海)有限公司 Matsuda Seisakusho Trading (Shanghai) Co.,Ltd. 中国 200052 上海市長寧區新華路728號 華聯發展大廈705/706室  
Rm.705-706, Union Development Building of china 728, Xin Hua Rd, Chang Nin, Shanghai District, 200052 China  
Tel: +86- (0)21-5230-3825  
Fax: +86- (0)21-5230-3826

ホームページアドレス <https://www.mtd.co.jp/>

MATSUDA SEISAKUSHO CO.,LTD.

Head Office/Plant 1-1 Kiyoku-cho, Kuki-shi, Saitama 346-0035  
Tel: +81 (0) 480-22-2111 Fax: +81 (0) 480-22-2110  
Tokyo Branch 11th floor 1103 Tokyo Kotsu Kaikan, 2-10-1, Yurakucho, Chiyoda-ku, 100-0006  
Tel: +81 (0)3-6284-2234 Fax: +81 (0) 3-6284-2235  
Osaka Sales Office 2-2-16 Esaka-cho, Suita-shi, Osaka 564-0063  
Tel: +81 (0) 6-6155-5444 Fax: +81 (0) 6-6155-5445  
Nagoya Sales Office 1-22 Kawanishi, Komaki-shi, Aichi 485-0045  
Tel: +81 (0) 568-72-5931 Fax: +81 (0) 568-73-1862



Injection Molding Machine for Rubber

XJ series



*New! Energy efficient, environmentally friendly, and easier to use*



Injection Molding  
Machine for Rubber

# XJ series

Easier to use, thanks to further improvements in six key features.

### Feature 1 Low workbench height

The workbench height is 185 mm lower than with our previous model, eliminating the need to set up another workbench and thereby boosting safety and work efficiency.

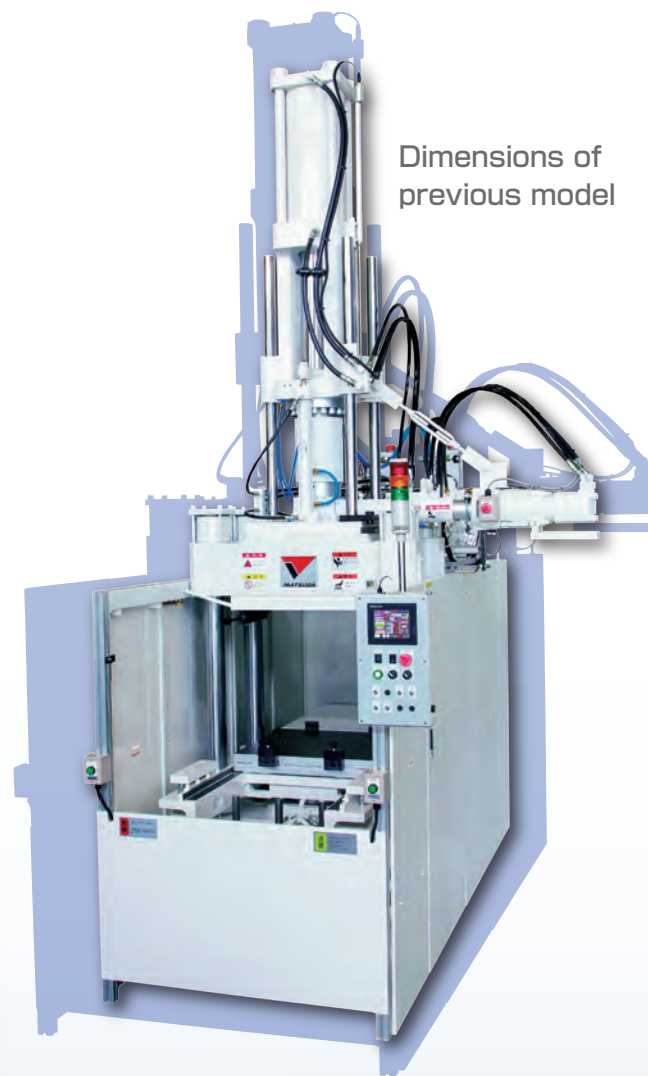
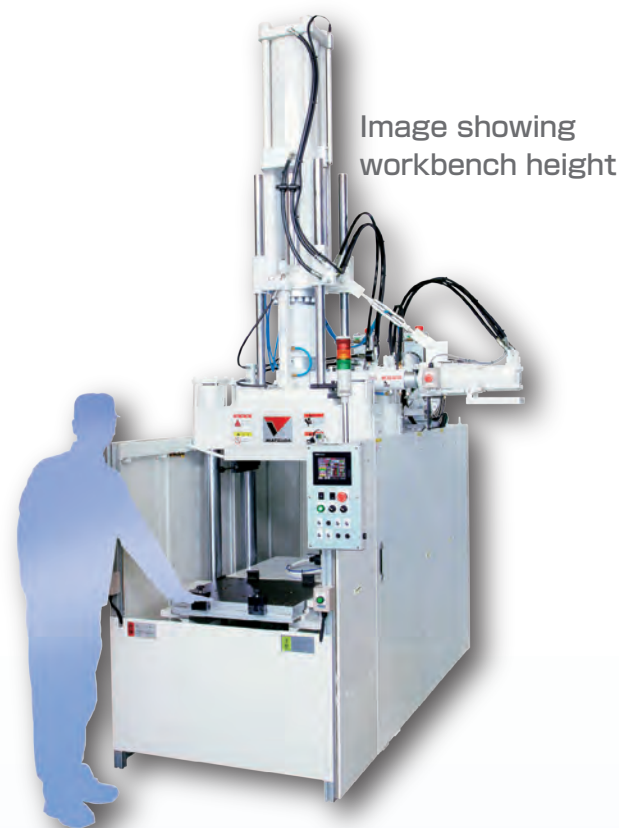
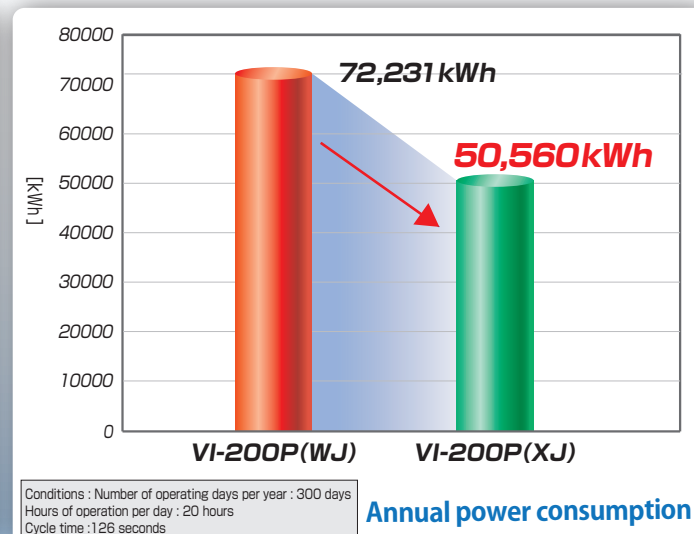
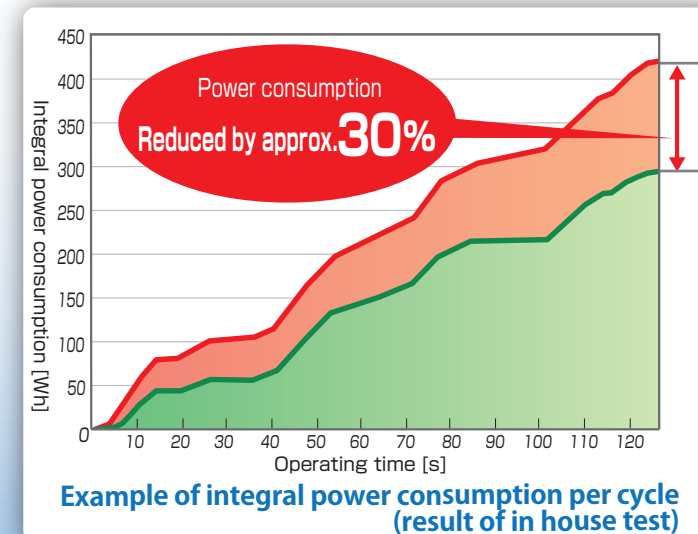
Workbench height  
Previous model : 1,052 mm ▶ XJ : 867 mm

### Feature 2 Saves space

The dramatically reduced machine dimensions maximize productivity from limited factory floorspace.

Overall height  
Previous model : 4,567 mm ▶ XJ : 4,187 mm  
Overall width  
Previous model : 1,209 mm ▶ XJ : 1,100 mm

### Feature 3 Energy efficient



### Feature 4 Quiet operating sound

The rotation control pump features reduced pump motor driving noise to help improve the factory work environment.

Previous model : 76dB ▶ XJ : 69dB  
(compared to our previous model)

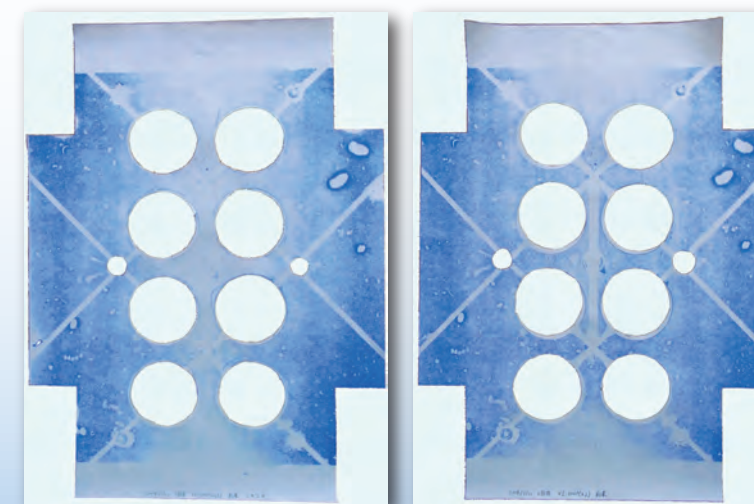
### Feature 5 Reduced molding cycle times

The smooth motion of the moving parts helps reduce molding cycle times.

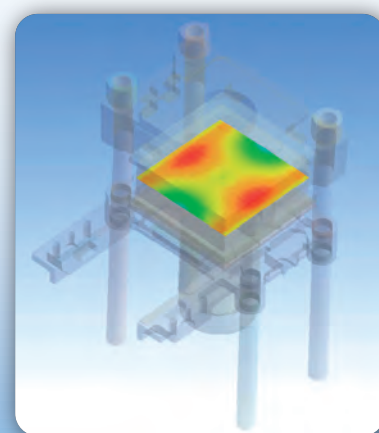
### Feature 6 Improved distribution of molding stress

We optimized the rigidity of each structural part based on analysis of contact pressures on mold mating surfaces by CAE, resulting in more uniform pressure distribution compared to previous models and helping to reduce burrs and enhance precision.

Result of test using pressure-sensitive paper



Our previous model (WJ) XJ  
With our previous model, the shape of the gate at the center appears blurred, indicating that pressure is lower at that section. With the XJ, due to more uniform pressure distribution, the shape is clearly visible.



## Equipment

### Standard accessory units

Rotation control pump
High effectiveness insulation plate
Touch panel (5.7 model)
Full operation switch
Operation data storage
Maintenance information management screen
Heating plate
Mold slide unit (with a selector switch furnished for mold slide)
Wire broken detector device for mold and heating plate
Hydraulic ejector unit after mold sliding (with an outer package and selector switch)
Out of material detection and alarm
Vacuum electric circuit
Status alarm unit
Clamping force regulator
Mold opening/closing speed regulator
Speed reducer for mold mounting (with a selector switch)
Low pressure (adjustable) clamping for mold protection
Low pressure clamping and injection compression (with selector switch)
Pressure relief degassing (1~9 times)
Photoelectric switches as safety
Overstroke prevention unit
Hot oil circulator
Injection speed change over 3 levels
Injection pressure change over 3 levels
Screw rotation control
Digital charge settings
Cycle counter
Cycle checker

### Optional units

Heat-uptimer
Mold simple attaching unit (lock-bar method)
Hot oil circulator for cold runner
Delay timer for cold runner
Alarm light
Vacuum pump
Material hoisting unit
Middle mold slide unit
Material stuffing unit

The rotation control pump featuring an inverter motor and the high effectiveness insulation plate significantly reduce power consumption. While actual power savings will vary with molding conditions, power consumption is typically approximately 30% lower than in our previous model (WJ).

XJ series